

LAND FOR THE FEW

THE STATE OF LAND CONCENTRATION IN EUROPE

LAND CONCENTRATION IN EUROPE AT A GLANCE

3% OF FARMS
>100ha
OWN 52% OF FARM LAND
336,000 farms control almost 91 million ha

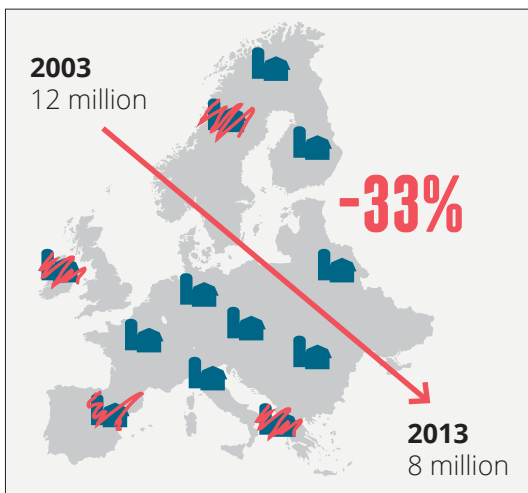


WHILE 75% OF FARMS < 10 ha
OWN 11% OF FARM LAND
8 million farms control 19 million hectares

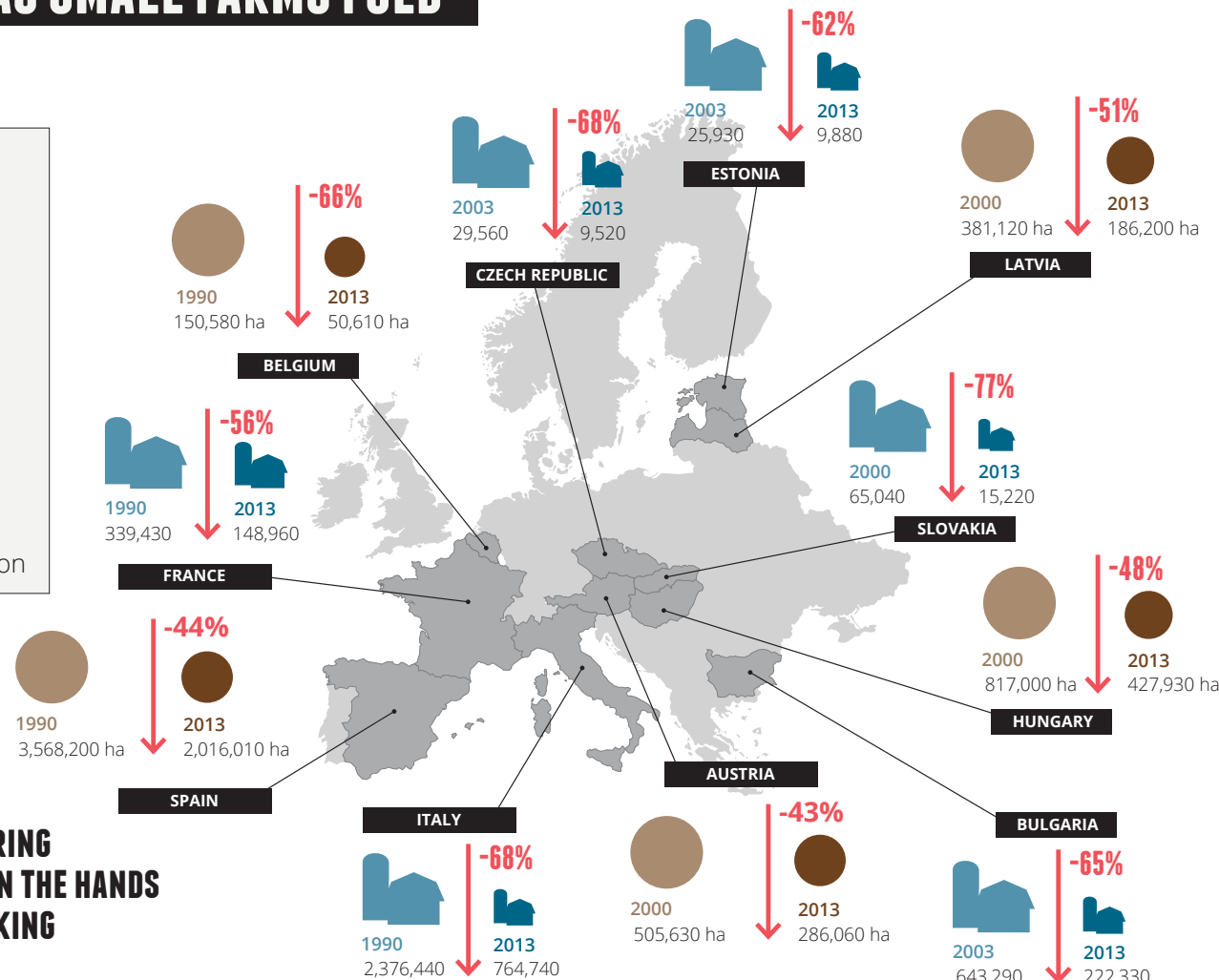
20% of farms, between 10 and 100 ha, control 37%

AS SMALL FARMS FOLD

OVER THE LAST DECADE
THE EU LOST A THIRD
OF ITS SMALL FARMS



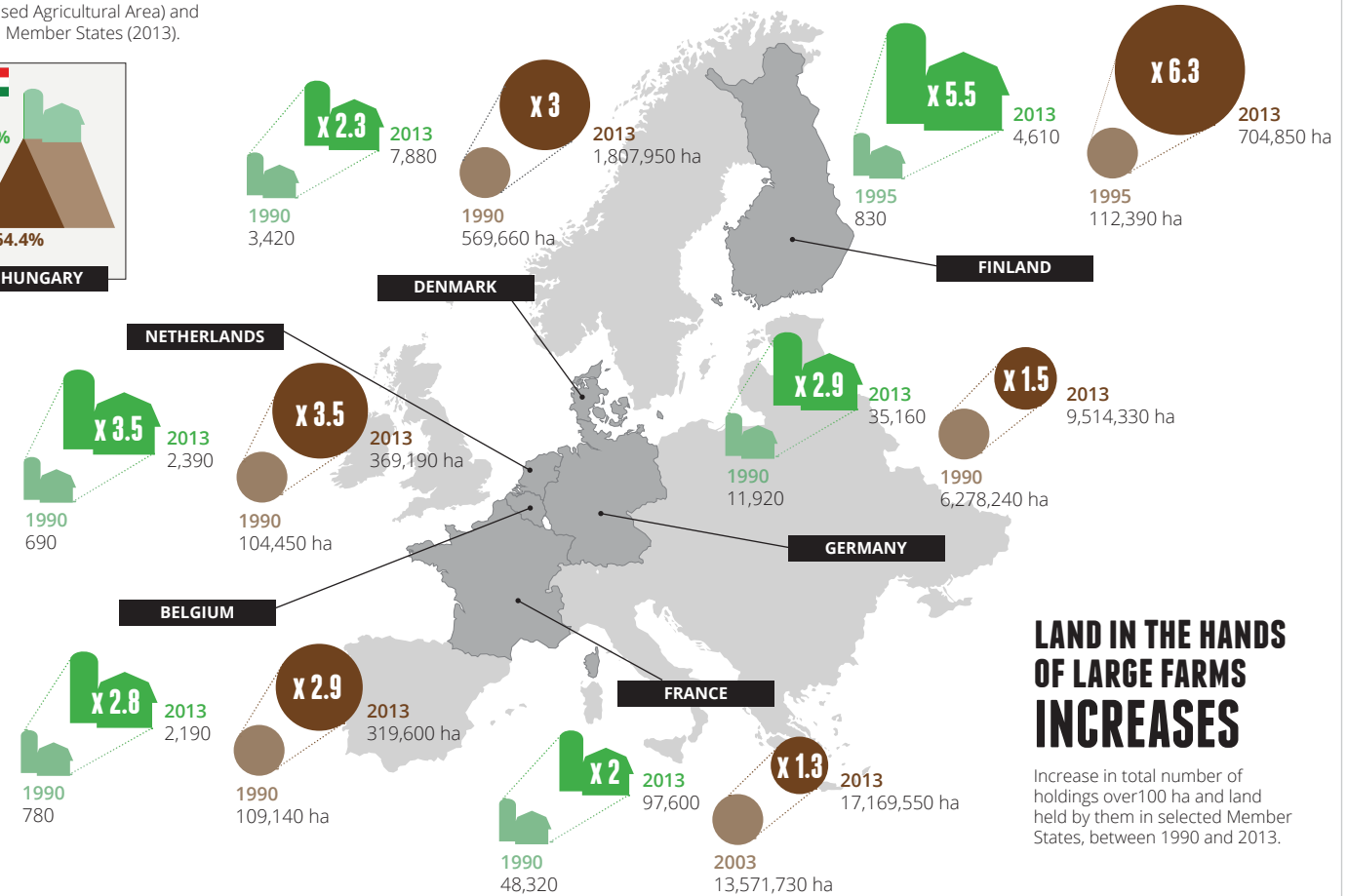
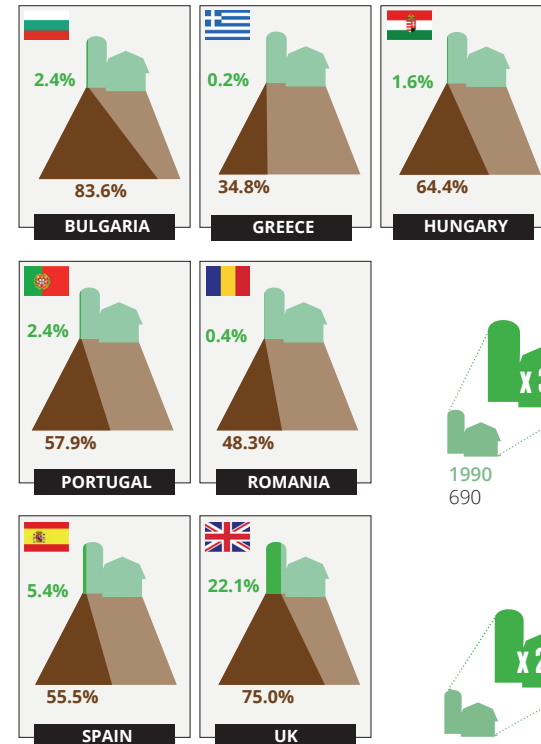
THROUGHOUT THE EU
SMALL FARMS ARE DISAPPEARING
& THE PERCENTAGE OF LAND IN THE HANDS
OF SMALL FARMERS IS SHRINKING



LARGE-SCALE FARMING SPREADS ACROSS THE EU

THE LARGEST FARMS CONTROL THE LARGEST LAND AREA

Farms >100 ha: Total UAA (Utilised Agricultural Area) and number of holdings in selected Member States (2013).



LAND IN THE HANDS OF LARGE FARMS INCREASES
Increase in total number of holdings over 100 ha and land held by them in selected Member States, between 1990 and 2013.

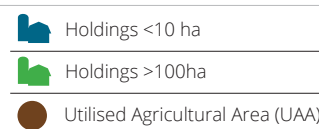
STRUCTURAL LAND INEQUALITY IN THE EU

MEASURE OF FARMLAND INEQUALITY

for selected Member States in 2013



THE GINI COEFFICIENT IS A MEASURE OF INEQUALITY ON A SCALE OF 0 – 1
with a Gini coefficient of 1 representing a state of maximum inequality and a coefficient of 0 representing total equality. For example, a zero coefficient means that, in the case of farmland distribution, all agricultural holdings hold the same amount of farmland or in the case of income, everyone has the same income while a coefficient of 1.0 means that in the case of farmland, a single agricultural holding holds all the farmland or, in the case of income, one person has all the income.



Source: Eurostat. TNI's complete data set of fully referenced statistics for all EU members can be found here: <https://www.tni.org/en/files/documents/land-for-the-few-the-state-of-land-concentration-in-europe-database-for-all-eu>

